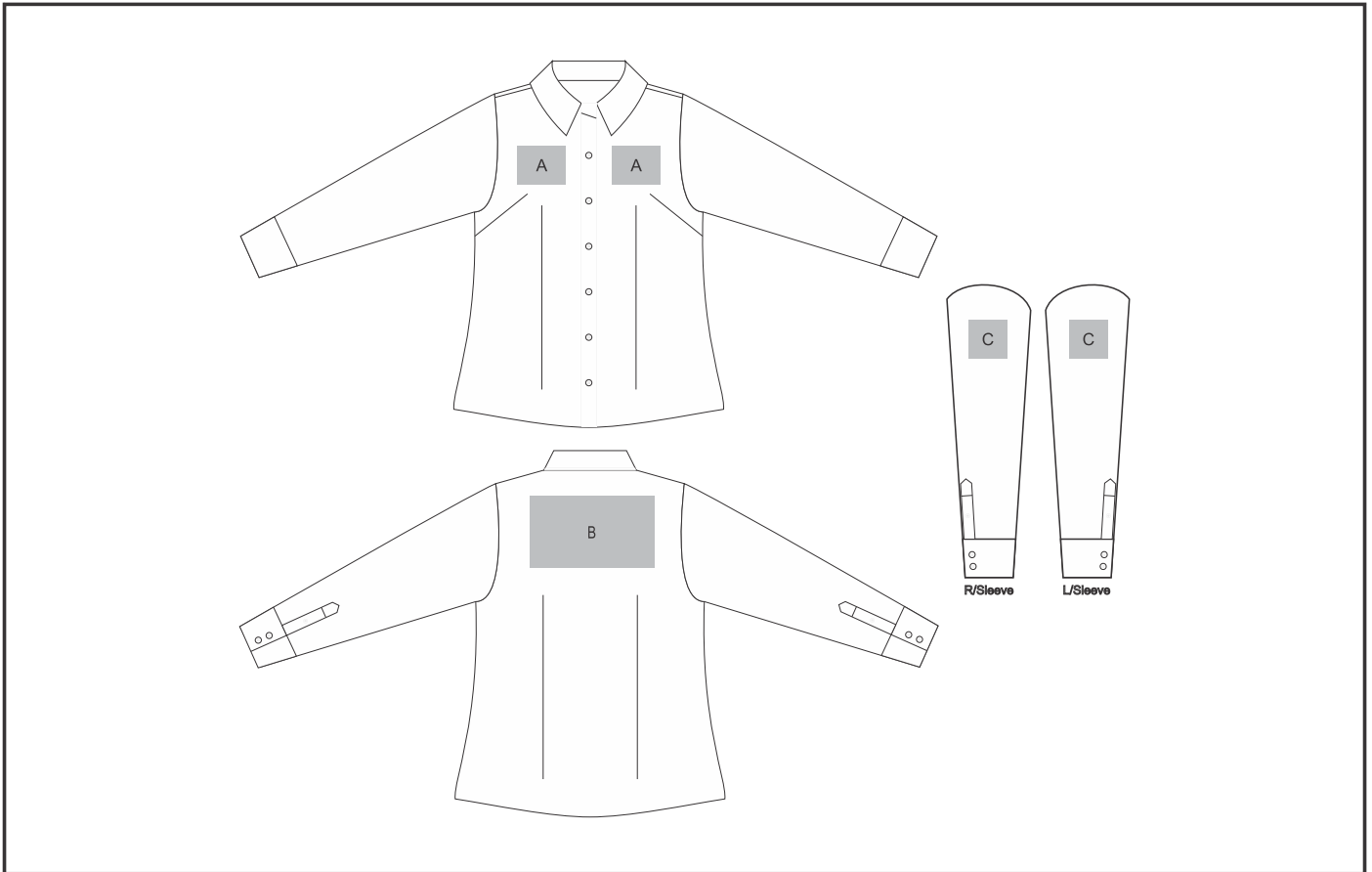


# ALT-EPLL

## Ladies Long Sleeve Empire Shirt



### Need to know:

- Includes 1-Position Digital Transfer (setup fee applies)
- Cannot guarantee a 100% straight branding on any clothing item with check or stripe detail
- DTC/EMB inclusive Parameters: Left/Right Chest or Back = 100mm x 100mm
- NB: Inclusive Branding is NOT applicable to Items marked as Reduced to Clear.

# Branding Options:

## **Position A**

1. Embroidery (EMB-A)  
N/A  
Size: 100mm wide x 80mm high
2. Screen Print (SA)  
1 Colour  
Size: 100mm wide x 80mm high
3. Digital Transfer Clothing A6 (DTC-A6)  
Full Colour  
Size: 100mm wide x 80mm high
4. Silicone (STP-A)  
N/A  
Size: 30mm wide x 30mm high
5. Silicone (STP-B)  
N/A  
Size: 50mm wide x 50mm high
6. Silicone (STP-C)  
N/A  
Size: 80mm wide x 80mm high
7. Silicone (STP-D)  
N/A  
Size: 100mm wide x 40mm high

## **Position C**

1. Embroidery (EMB-A)  
N/A  
Size: 80mm wide x 80mm high
2. Screen Print (SA)  
1 Colour  
Size: 60mm wide x 60mm high
3. Digital Transfer Clothing A6 (DTC-A6)  
Full Colour  
Size: 80mm wide x 80mm high
4. Silicone (STP-A)  
N/A  
Size: 30mm wide x 30mm high
5. Silicone (STP-B)  
N/A  
Size: 50mm wide x 50mm high
6. Silicone (STP-C)  
N/A  
Size: 80mm wide x 80mm high

## **Position B**

1. Embroidery (EMB-A)  
N/A  
Size: 100mm wide x 100mm high
2. Screen Print (SA)  
1 Colour  
Size: 260mm wide x 150mm high
3. Digital Transfer Clothing A6 (DTC-A6)  
Full Colour  
Size: 148mm wide x 105mm high
4. Digital Transfer Clothing A5 (DTC-A5)  
Full Colour  
Size: 210mm wide x 148mm high
5. Silicone (STP-A)  
N/A  
Size: 30mm wide x 30mm high
6. Silicone (STP-B)  
N/A  
Size: 50mm wide x 50mm high
7. Silicone (STP-C)  
N/A  
Size: 80mm wide x 80mm high
8. Silicone (STP-D)  
N/A  
Size: 120mm wide x 40mm high