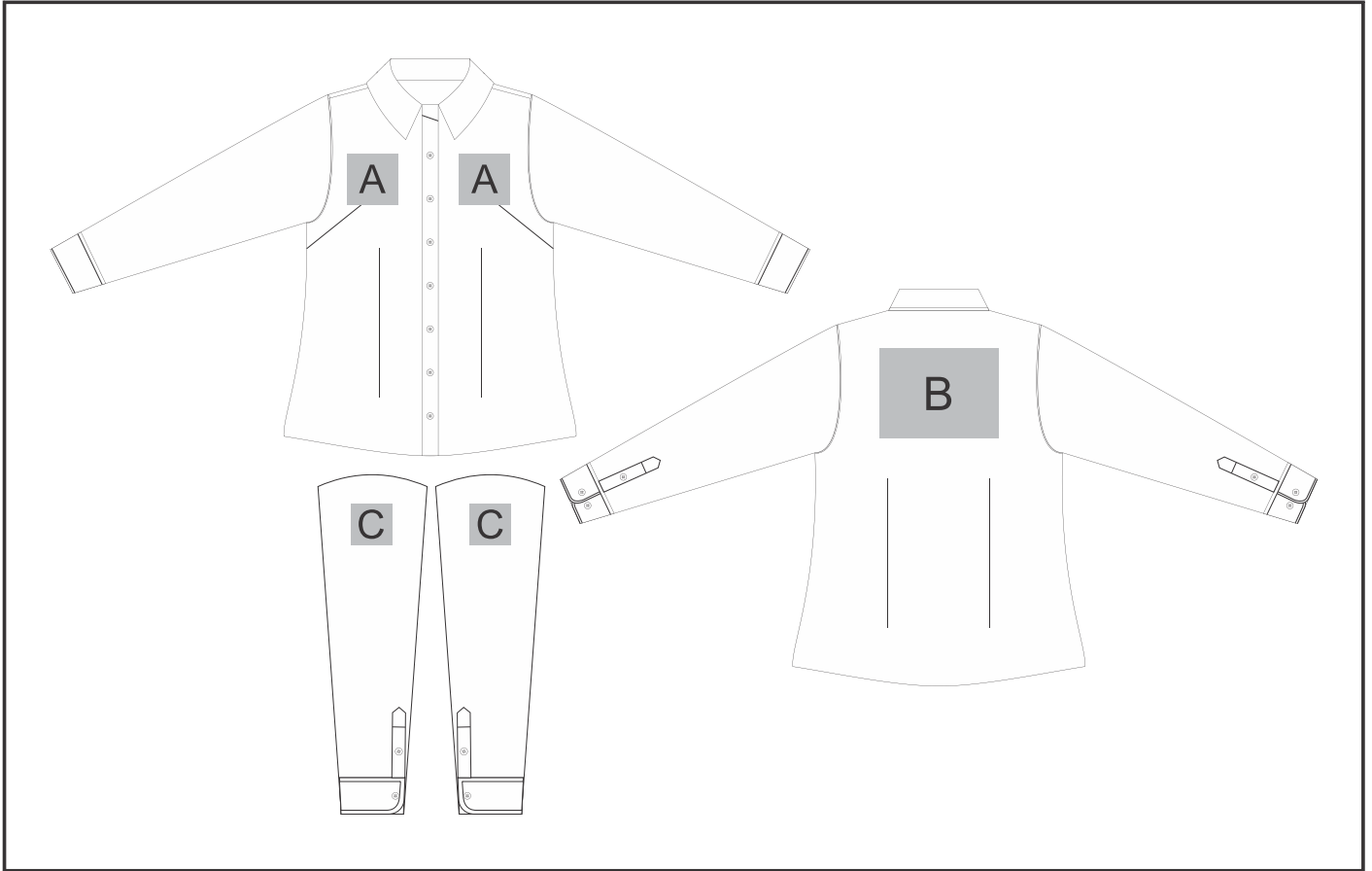


# BAS-10261

## Ladies Long Sleeve Carolina Shirt



### Need to know:

- Includes 1 Position Embroidery (setup fee applies)
- Cannot guarantee a 100% straight branding on any clothing item with check or stripe detail
- EMB inclusive Parameters: Left/Right Chest or Back = 100mm x 100mm

# **Branding Options:**

## **Position A**

1. Embroidery (EM-CLOTHING)  
N/A  
Size: 100mm wide x 100mm high
2. Screen Print (SC)  
1 Colour  
Size: 100mm wide x 60mm high
3. Digital Transfer Clothing A6 (DTC-A6)  
Full Colour  
Size: 100mm wide x 100mm high
4. Silicone (STP-A)  
N/A  
Size: 30mm wide x 30mm high
5. Silicone (STP-B)  
N/A  
Size: 50mm wide x 50mm high
6. Silicone (STP-C)  
N/A  
Size: 80mm wide x 80mm high
7. Silicone (STP-D)  
N/A  
Size: 100mm wide x 40mm high

## **Position C**

1. Embroidery (EM-CLOTHING)  
N/A  
Size: 80mm wide x 80mm high
2. Screen Print (SC)  
1 Colour  
Size: 60mm wide x 60mm high
3. Digital Transfer Clothing A6 (DTC-A6)  
Full Colour  
Size: 80mm wide x 80mm high
4. Silicone (STP-A)  
N/A  
Size: 30mm wide x 30mm high
5. Silicone (STP-B)  
N/A  
Size: 50mm wide x 50mm high
6. Silicone (STP-C)  
N/A  
Size: 80mm wide x 80mm high

## **Position B**

1. Embroidery (EM-CLOTHING)  
N/A  
Size: 200mm wide x 150mm high
2. Screen Print (SC)  
1 Colour  
Size: 200mm wide x 150mm high
3. Digital Transfer Clothing A6 (DTC-A6)  
Full Colour  
Size: 148mm wide x 105mm high
4. Digital Transfer Clothing A5 (DTC-A5)  
Full Colour  
Size: 210mm wide x 148mm high
5. Silicone (STP-A)  
N/A  
Size: 30mm wide x 30mm high
6. Silicone (STP-B)  
N/A  
Size: 50mm wide x 50mm high
7. Silicone (STP-C)  
N/A  
Size: 80mm wide x 80mm high
8. Silicone (STP-D)  
N/A  
Size: 120mm wide x 40mm high