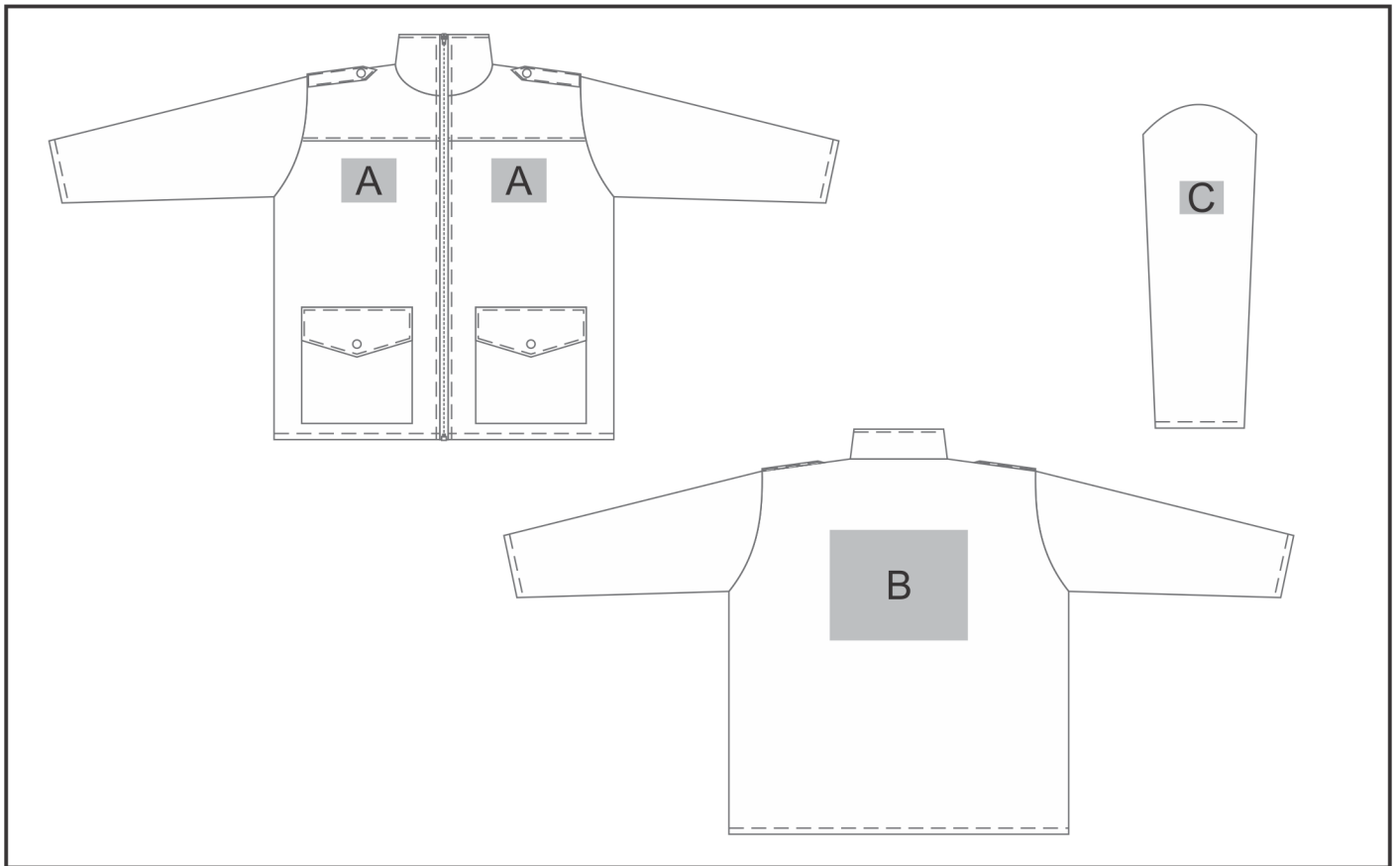


# JC-AL-125-A

## Alaris Padded Jacket



### Need to know:

- Includes 1-Position Embroidery (setup fees apply).
- EMB Inclusive Parameters: Left/Right Chest or Back = 100mm x 100mm.
- EMB: No Access Zip, Branding will go through the Lining.

## **Branding Options:**

### **Position A**

1. Embroidery (EMB-A)  
N/A  
Size: 100mm wide x 70mm high
2. Digital Transfer Clothing A6 (DTC-A6)  
Full Colour  
Size: 80mm wide x 80mm high

### **Position C**

1. Embroidery (EMB-A)  
N/A  
Size: 80mm wide x 60mm high

### **Position B**

1. Embroidery (EMB-A)  
N/A  
Size: 200mm wide x 200mm high
2. Digital Transfer Clothing A6 (DTC-A6)  
Full Colour  
Size: 148mm wide x 105mm high
3. Digital Transfer Clothing A5 (DTC-A5)  
Full Colour  
Size: 210mm wide x 148mm high
4. Digital Transfer Clothing A4 (DTC-A4)  
Full Colour  
Size: 250mm wide x 200mm high